

Stick-down floor



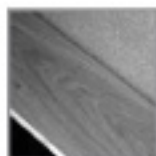
- 1 • In the case of herringbone and mitred herringbone, start fitting from the central axis of the room.
 • The subfloor must be flat and dust-free.



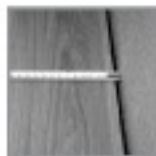
- 2 • Spread the adhesive on the floor in a criss-cross pattern using a toothed spatula 4 x 4 mm. The adhesive should be spread at a rate of about 800 g / m². Apply small areas at a time. The area should resemble the photo opposite.



- 3 • Apply the panel or strip to the adhesive, pressing it in to achieve good contact.
 There is no need to stick the tongue and groove.
 Do not forget the expansion gap around the edge.



- 4 • Position the wedges between the flooring strip and the wall to leave an expansion gap all round the edge of the room (1,5mm per 1m of wood flooring, minimum 8 mm). Continue laying, regularly checking squaring and alignment.



- 5 • The last strip should be tailor cut taking into account the width left and not forgetting the expansion gap.



- 6 • Fit the last strip using a specialized tool.
 • Remove the wedges 24 hours after laying and fix the skirting-boards in place without exerting pressure on the wood floor.

SPECIAL CASES

- If the wood flooring is covered with a facing of kraft paper, this must be dampened slightly, then removed as the floor is laid. The panel should be laid then with the kraft side uppermost.